

“

•

”

——

“

”

www.csrc.gov.cn

2017-06-16

10%

“ ”

“ ”

“ ”

“X”

“ - - ”

3634

2015 3 23

“X”214

4144

19.37

10:42

18.91

21.32

100

31

“X”

12.7%

“X”

55

5

2796



1 3 24 “X”

3 25 23.45 9.77%

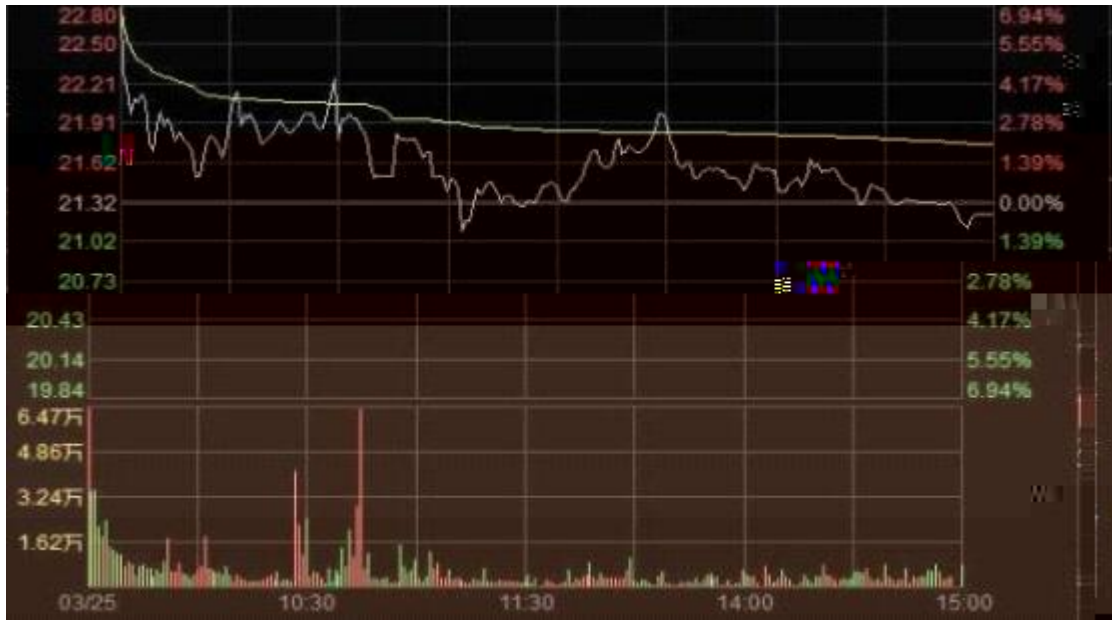
700 9 19 48

9 20

“X” 22.8

6.94% 22.8 21.24

25 “X” 21.21 “ ”



2 3 25 “X”

2014

2015

A “ ” 2017

12

“ ”

“ ”

“ ”

3 25 22.8

100 “X”

7

